

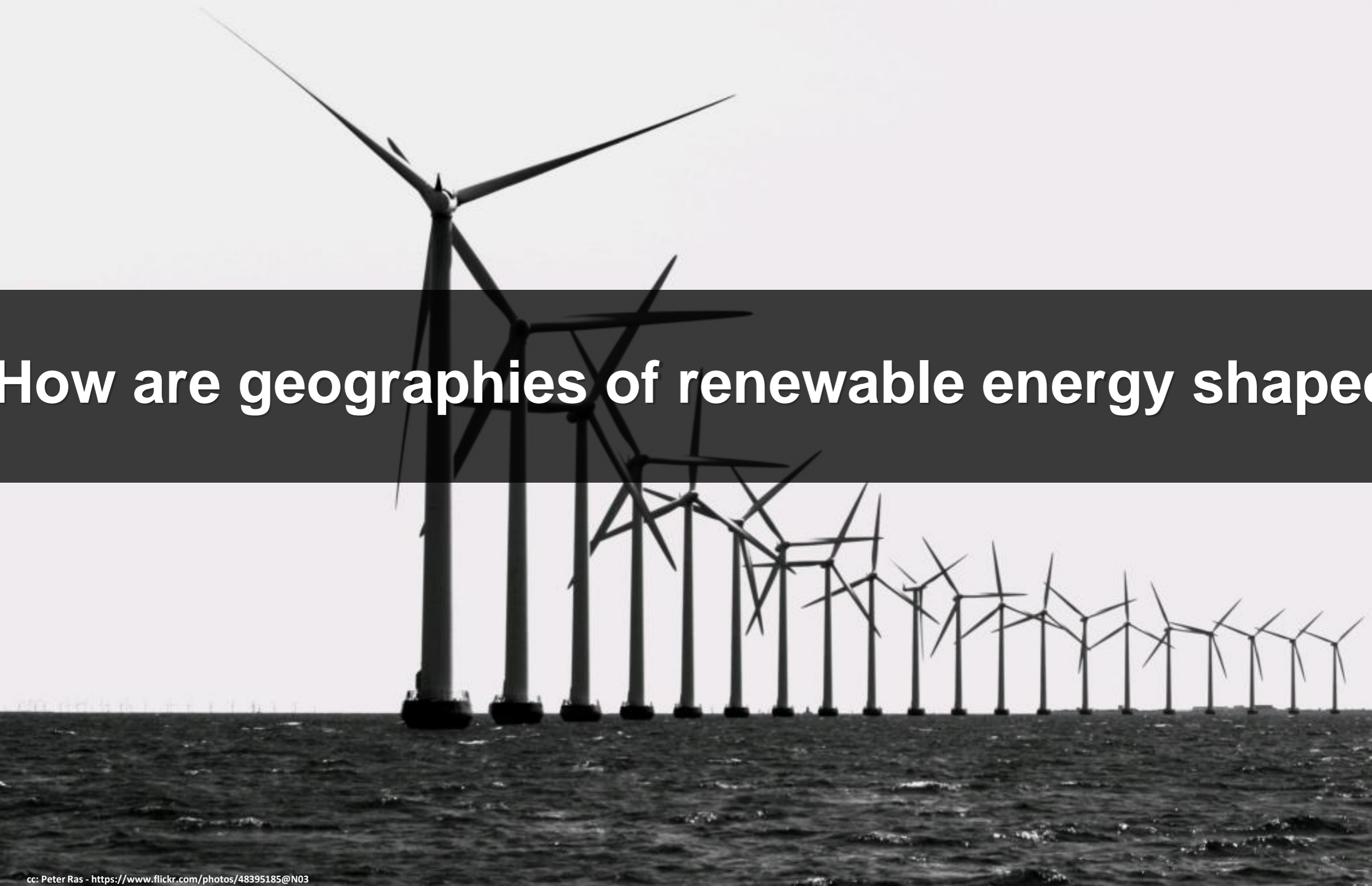
# Contesting Renewable Energy in India



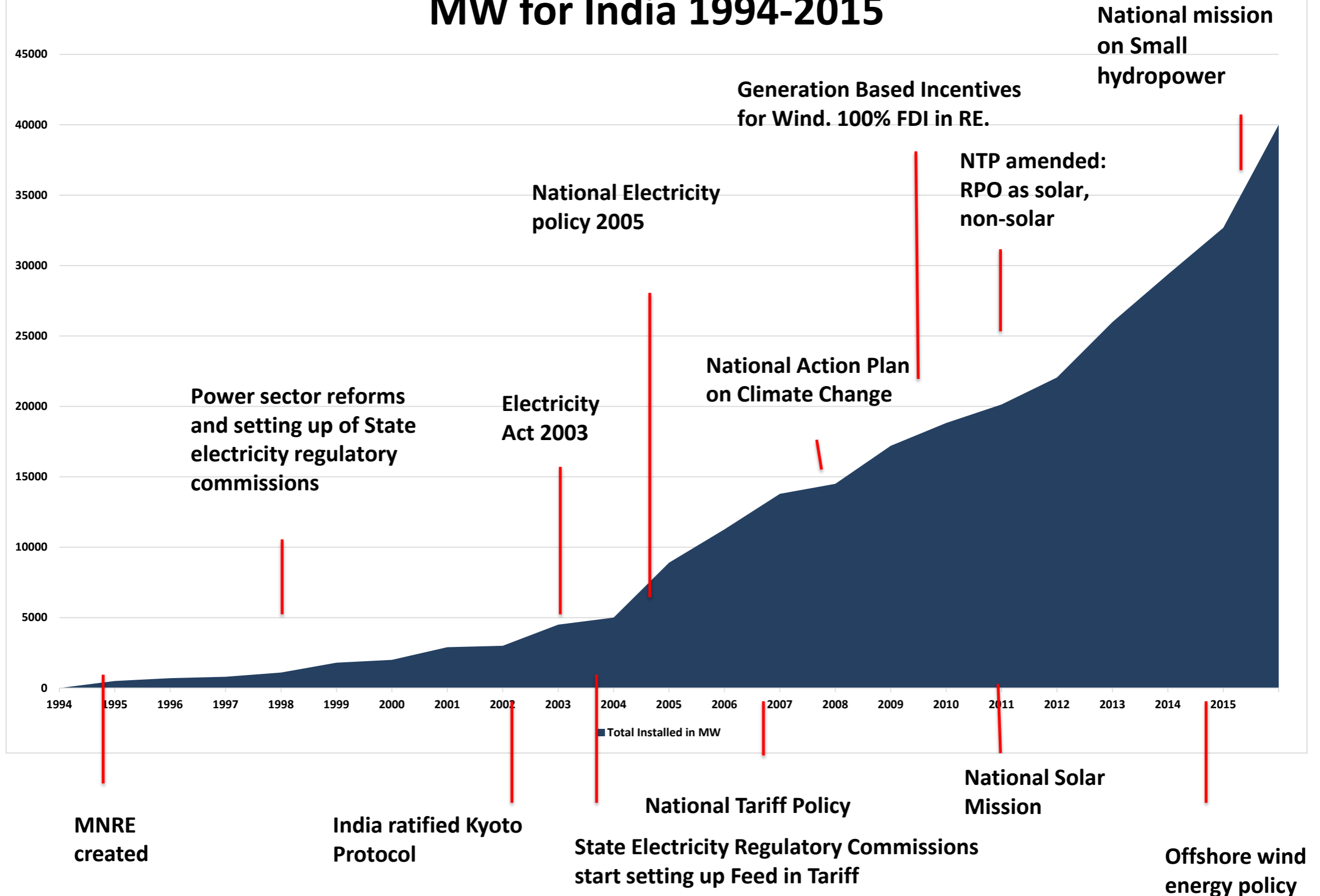
Shikha Lakhanpal  
ATREE, Bangalore




# How are geographies of renewable energy shaped



# Key Initiatives and Renewable Installed Capacity in MW for India 1994-2015



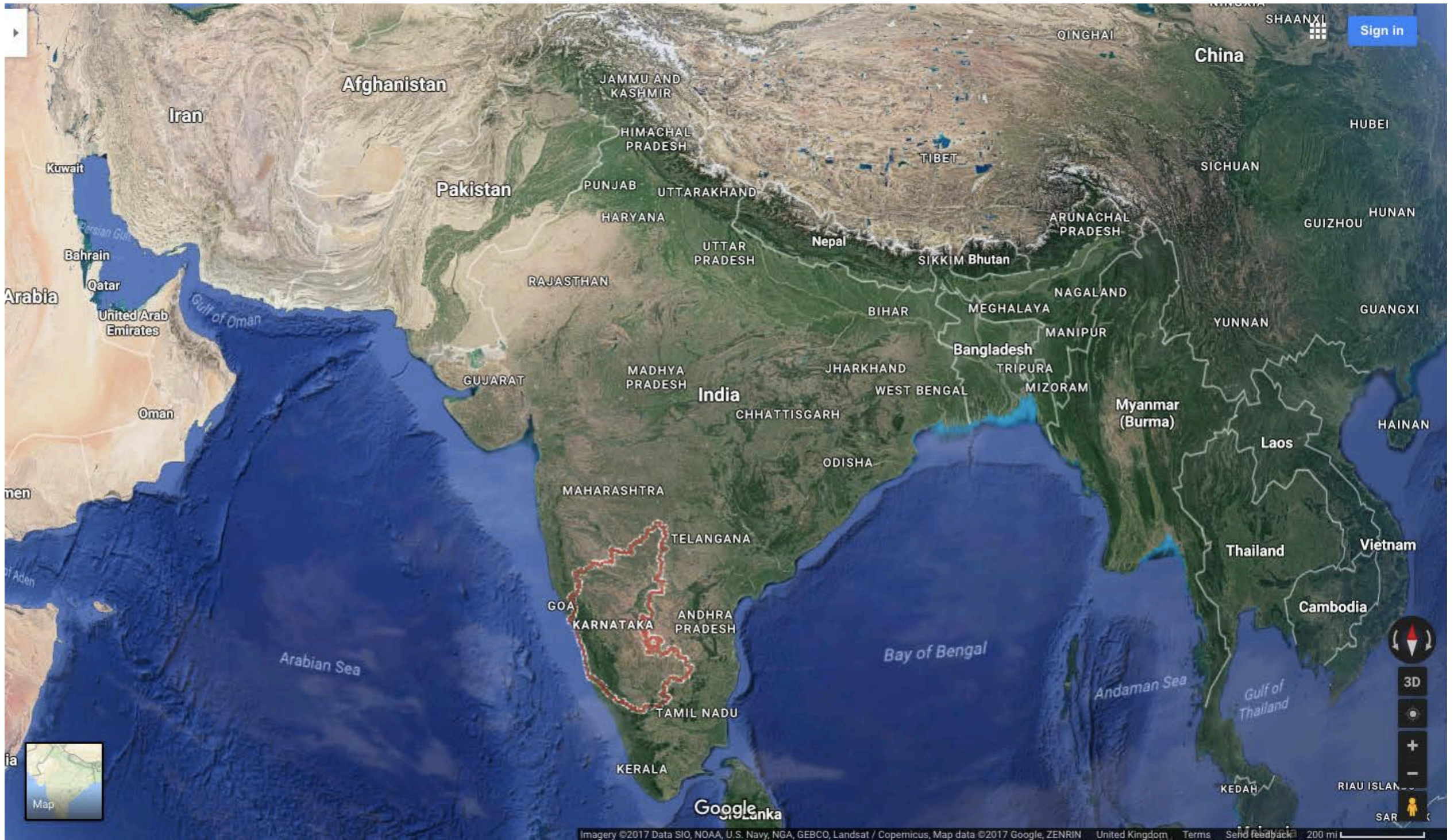


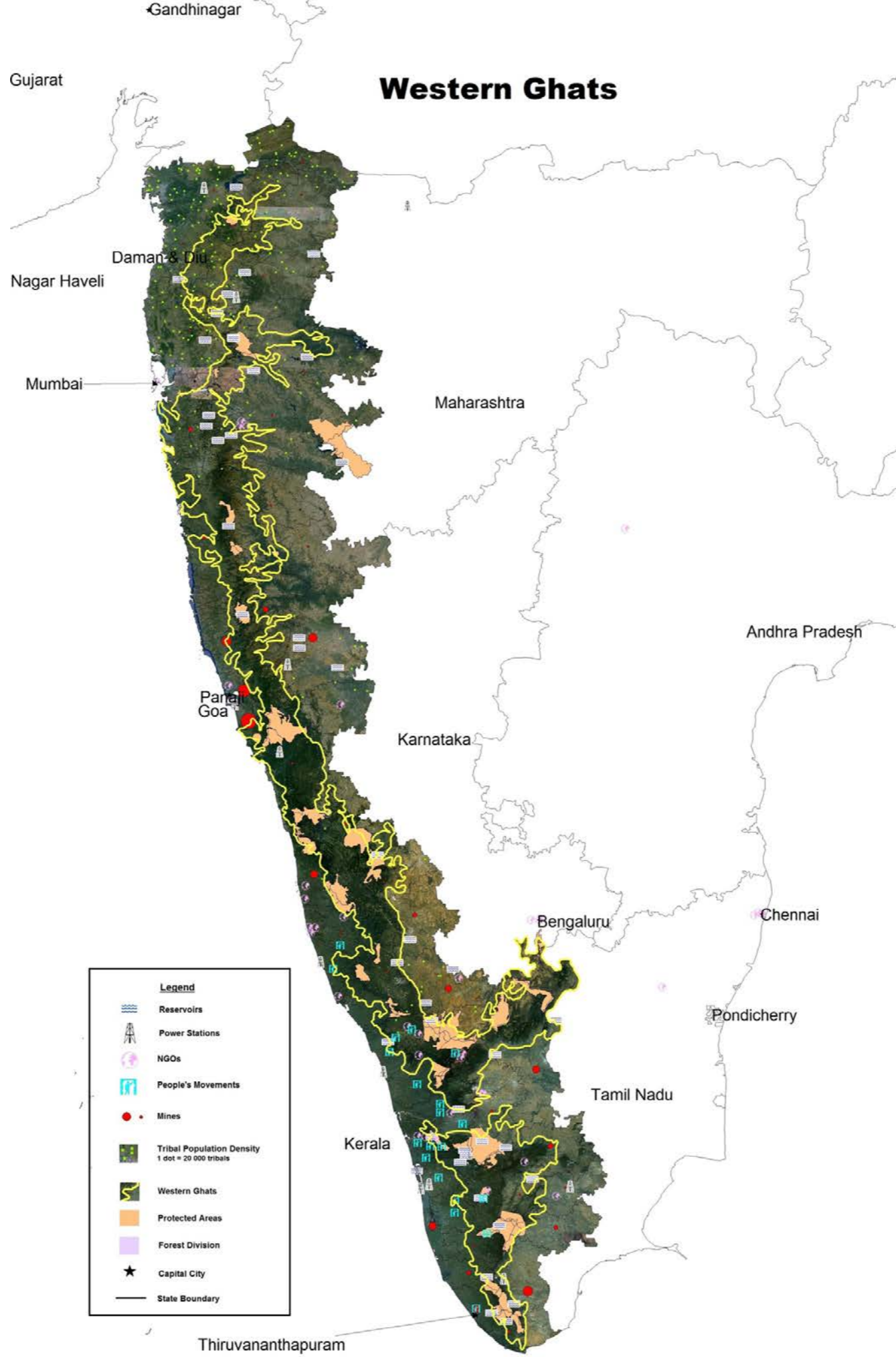
“There is **no storage** of water and no dam is constructed in these projects. Small hydro projects are **run-of-river** and are **environmentally sustainable**. These projects do not encounter the issues associated with large-scale hydro projects. There is **no deforestation, resettlement or rehabilitation**”

*National Mission on Small Hydro Power, Ministry of New and Renewable Energy, Government of India (April 2015)*

An aerial photograph of rolling green hills. The hills are covered in a dense forest of green trees. The lighting is soft, creating a misty or hazy atmosphere. The hills curve and rise and fall across the frame, creating a sense of depth and movement. A dark horizontal band is overlaid across the middle of the image, containing the title text.

# Case study: Karnataka







**Kukke SHP dam**



Ulippu

115

115







*“KREDL supported us when we told them about our **livelihoods** but the (federal) Ministry of New and Renewable Energy did not listen to us. For the big international organisations like UNFCCC, we had to highlight the **biodiversity** angle.”*

- Pradip K, local activist



# Conclusion

# Thanks



Shikha Lakhanpal | [shikha.lakhanpal@atree.org](mailto:shikha.lakhanpal@atree.org)